

Miami University Gateways

Oxford, OH



Project Stats

Client:	MKSK
Location:	Oxford, OH
Year:	2018
Market:	Geovisualization
Project Size:	173.00 Acres

Services Provided:

GEOVISUALIZATION SERVICES

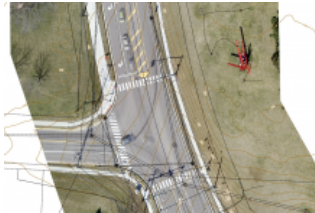
Orthophotography

SURVEYING SERVICES

Topographic Surveys

TRANSPORTATION ENGINEERING SERVICES

Safety Studies
Traffic Impact Studies
Traffic Signal Design



IN 2017 MKSK and Bayer Becker teamed up to help redefine the eastern and southern gateways into the Miami University campus. The projects look at beautification, multi-modal transportation, safety and access to the campus. The orthophotos, point clouds and still photos captured of these two corridors serves as a visually rich and well defined way to communicate design intent, verify existing infrastructure, and serve as a backdrop to determine appropriateness of proposed measures.